

Stardust



GREAT STYLE. GREAT VIBE. GREAT VALUE.

Just a block east of the gorgeous Jacksonville University campus, you'll find Stardust, a quirky mid-century modern community that has been recently restored to its original, authentic glory. With a convenient location, unique retro style, friendly atmosphere, and attentive staff, Stardust is easily one of the best values in the Arlington Manor-Lake Lucina neighborhood.

Interiors

- Open & spacious floor plans
- Designer color schemes
- Wood-style flooring
- High-speed Internet access available
- Cable ready
- Ceiling fans in bedrooms & living rooms*
- Linen closets
- Pendant lighting
- Private patios & balconies
- Mini blinds

Kitchens

- Contemporary cabinetry & fixtures
- Designer countertops
- Ceramic tile backsplashes
- Electric black appliances
- Frost-free refrigerators
- Built-in microwaves
- Double stainless steel sinks

Convenience

- Resort-style swimming pool
- 24-hour emergency maintenance
- Professionally landscaped grounds
- One block from Jacksonville University
- Within walking distance of shopping & dining along Merrill Road
- Minutes from Downtown, beaches & Regency Square Mall
- Easy access to Arlington Expressway & the East Beltway

*Available in select homes

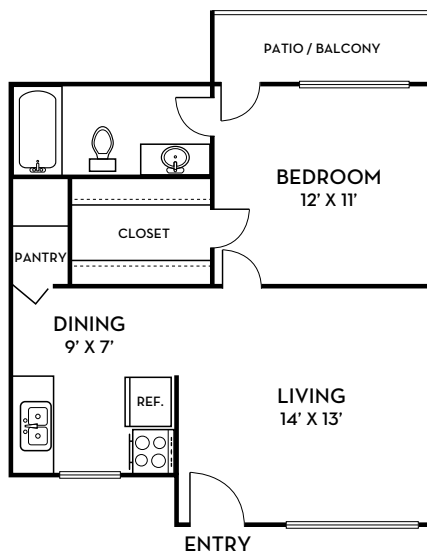
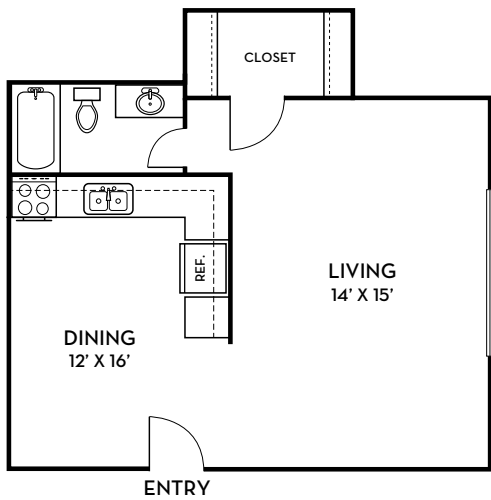


A1

Studio
505 SQ. FT

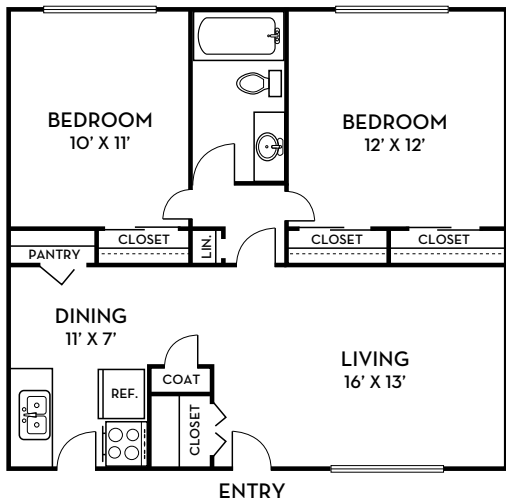
A2

1 bed + 1 bath
628 SQ. FT



B1

2 bed + 1 bath
865 SQ. FT



*All dimensions and square footages are approximate.

S2CP.COM/STARDUST

STARDUST@S2RES.COM



Handicapped accessible units available. The owner and management company for Stardust apartment homes comply fully with the provisions of the Equal Housing Opportunity Laws and nondiscrimination laws. The apartments have been designed and constructed to be accessible in accordance with those laws.

5772 MERRILL RD. #12
JACKSONVILLE, FL 32277

904-744-5322