

THE MARK AT 2600

Make your way to The Mark at 2600! A pristine living community where your wants, needs, and expectations are constantly being exceeded! Feel the comfort of being at home, while enjoying the amenities of being at an all-inclusive resort. The Mark at 2600 will make a mark in your heart as it becomes your new residence.



COMMUNITY FEATURES

- Controlled access gates
- Reserved covered parking
- Community clubhouse
- State-of-the-art fitness center
- Swimming pool
- Playground
- Picnic/grilling area
- 24-hr emergency maintenance crew
- Professionally landscaped
- Clothes care center

INTERIOR PERKS

- Open, spacious floor plans
- Premium Berber carpeting
- Wood-style flooring*
- Multiple telephone outlets
- Cable-ready
- Wood-burning fireplaces
- Ceiling fans in dining rooms
- Washer & dryer connections
- Linen closets*
- Spacious closets*
- Track lighting
- Pendant lighting*
- Private patios & balconies
- Vaulted ceilings*
- Separate showers with glass enclosures*

KITCHEN TOUCHES

- Contemporary cabinetry
- Granite countertops
- Contemporary fixtures
- Ceramic tile backsplash
- Pantries*
- Black electric appliances
- Double stainless steel sinks
- Multi-cycle dishwashers

NEARBY ACCESS

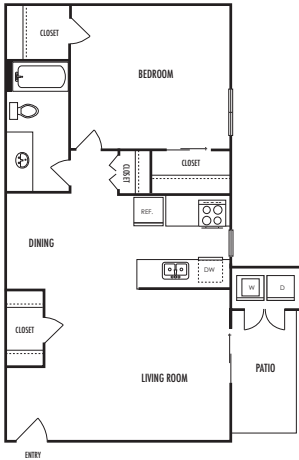
- North HWY 360
- Arlington ISD
- 15 minutes to Fort Worth
- DFW International Airport
- UT Arlington
- Fantastic shopping
- Delicious dining

*Available in select homes

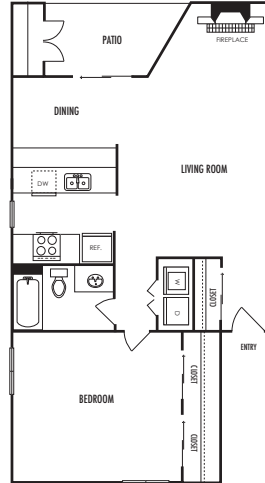
MAKE YOUR MARK YOUR HOME.



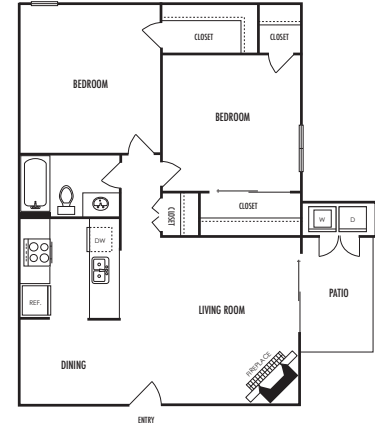
A1 1 BED + 1 BATH
718 SQ FT



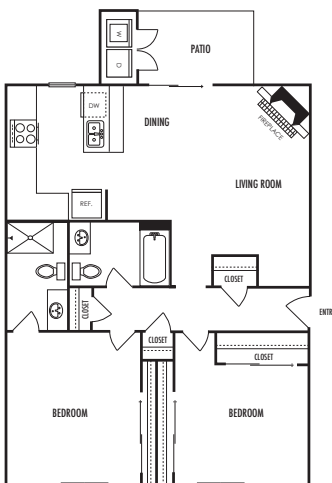
A2 1 BED + 1 BATH
732 SQ FT



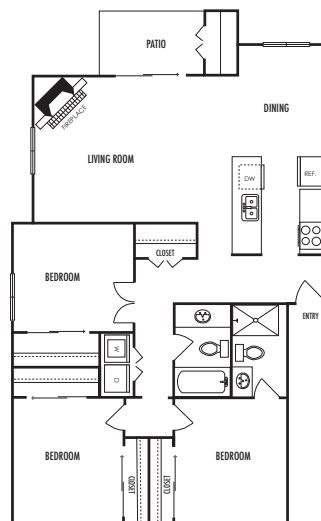
B1 2 BED + 1 BATH
858 SQ FT



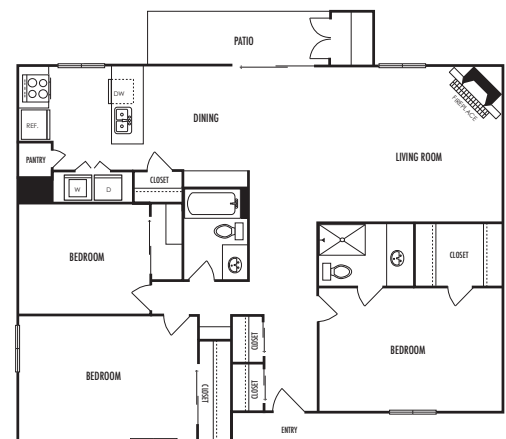
B2 2 BED + 2 BATH
998 SQ FT



C1 3 BED + 2 BATH
1,240 SQ FT



C2 3 BED + 2 BATH
1,488 SQ FT



All sq footages and measurements are approximate.



HANDICAPPED ACCESSIBLE UNITS AVAILABLE. The owner and management company for The Mark at 2600 apartments comply fully with the provisions of the Equal Housing Opportunity Laws and nondiscrimination laws. The apartments have been designed and constructed to be accessible in accordance with those laws.

MARKAT2600@S2RES.COM

P (817) 640-1102

S2CP.COM/MARKAT2600

2624 SOUTHERN HILLS BLVD.
ARLINGTON, TX 76006