

LA PALMA



Leave your worries at the door.

Located in the Monterey neighborhood of southwest Arlington, La Palma is a charming mid-century modern apartment community that has been fully updated, inside and out. It features shady courtyards, a relaxed vibe, and neighborly atmosphere. Plus, its convenient location, service-oriented staff, and great value all combine to make La Palma a community you'll love to come home to.

Interiors

- Open & spacious floor plans
- Designer color schemes
- Wood-style flooring
- High-speed Internet access available
- Cable ready
- Ceiling fans in bedrooms & living rooms*
- Linen closets
- Pendant lighting
- Private patios & balconies
- Mini blinds

Kitchens

- Contemporary cabinetry & fixtures
- Designer countertops
- Ceramic tile backsplashes
- Electric black appliances
- Frost-free refrigerators
- Built-in microwaves
- Double stainless-steel sinks

Convenience

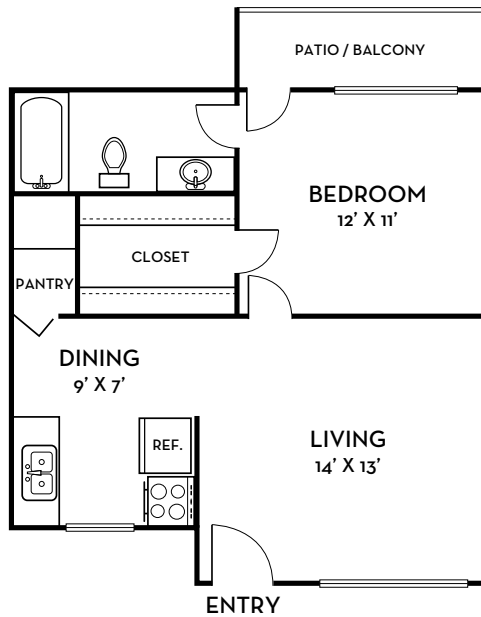
- 24-hour emergency maintenance
- Professionally landscaped grounds
- Within walking distance of shopping & dining along University Road
- Minutes from Downtown, beaches, & Regency Square Mall
- Easy access to Arlington Expressway & the East Beltway

*Available in select homes.

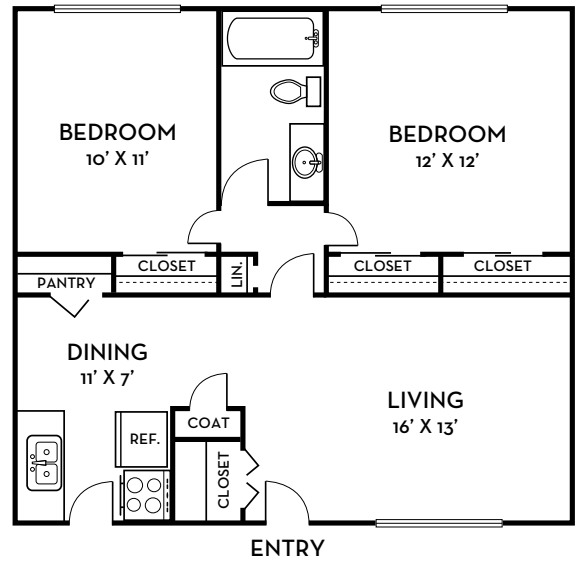




A1 1 bed, 1 bath
605 Sq. Ft.



B1 2 bed, 1 bath
868 Sq. Ft.



All dimensions and square footage are approximate.

s2cp.com/lapalma • lapalma@s2res.com



Handicapped Accessible Units Available. The owner and management company for La Palma comply fully with the provisions of the Equal Housing Opportunity Laws and nondiscrimination laws. The apartments have been designed and constructed to be accessible in accordance with those laws.

5522 Playa Way #1
Jacksonville, FL 32211
904-551-9271